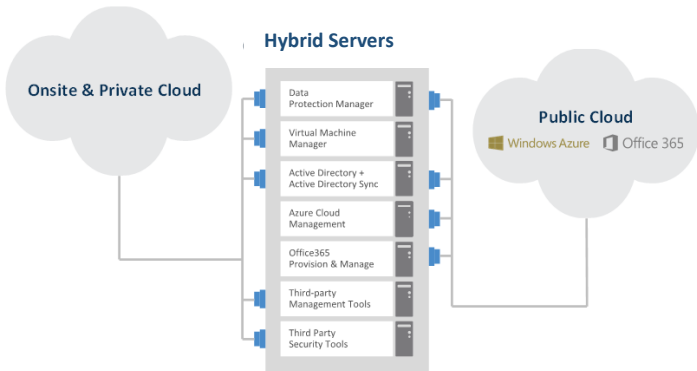


Hybrid Server Technical Features Summary



Cloud Integration

The Hybrid Server is an Azure Certified Solution which automatically connects to your existing Office 365 or Azure subscriptions or creates new subscriptions delivering:

- Secure authentication and integrations with Office 365 & Azure
- Aggregates status of services delivered via the Hybrid Server

Backup & Data Protection

Efficiently backs up your local servers onto the Hybrid Server and sends copies to Azure for an additional layer of protection. The standard service includes:

- Local backup stored directly on the Hybrid Server
- Local backup is sent to Azure with 14 day retention policy



Office365 Backup

Provides full or granular backups of Office 365 mailboxes directly to the Hybrid Server. With brick-level storage and advanced search options, you have the option to restore entire mailboxes or selected data. Features include:

- Continuous incremental backup
- Granular restore features
- Offline storage
- Flexible retention options

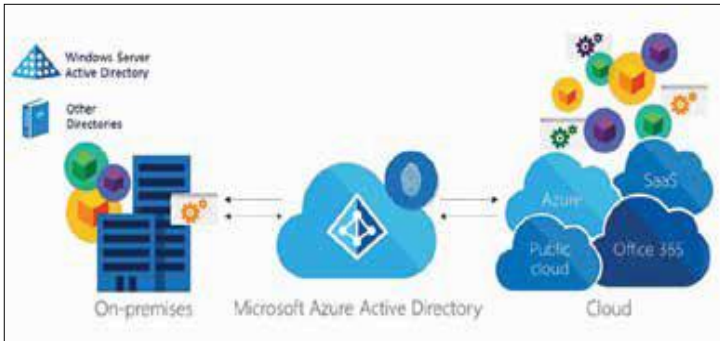
Desktops as a Service/Virtual Desktops

Automated deployment and integration of virtual desktop components & features can be enabled allowing for:

- Delivery of virtual desktops via the Hybrid Server's Microsoft RDS and Citrix options
- Line of Business Application Hosting
- Integrations into Office 365



Hybrid Server Technical Features Summary



Active Directory / Single Sign On

Azure Active Directory provides an affordable, easy to use solution to deliver SSO access to thousands of SaaS applications like O365. New or existing AD integration with Azure Active Directory is deployed to deliver:

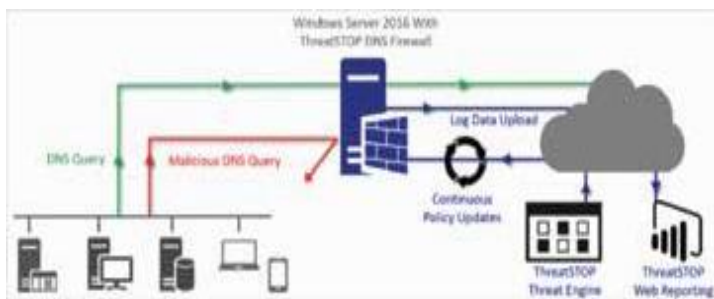
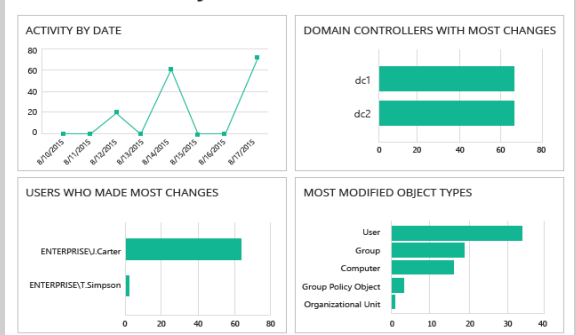
- Self- service, end user password management
- Multi-factor authentication & roles based access controls
- Assurances that corporate compliance goals are met

Netwrix Active Directory Auditing

Netwrix Auditor for Active Directory delivers security analytics about Active Directory and Group Policy. This data is used to mitigate the risk of privilege abuse, proves IT compliance & streamlines troubleshooting:

- Audit reports and dashboards
- Logon auditing
- Password expiration alerting and inactive user tracking
- Active Directory compliance

Active Directory Overview



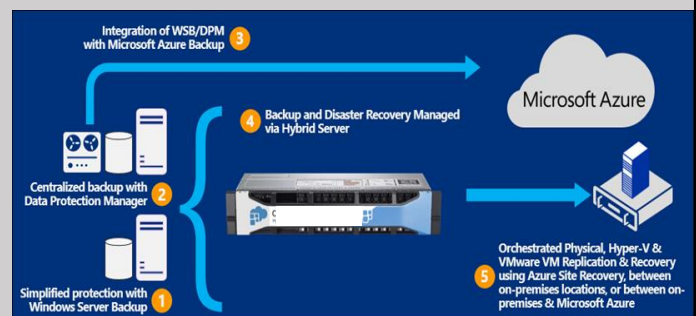
ThreatSTOP DNS Firewall

Delivers up-to-the-minute protection against advanced threats, and enhances your existing network security by adding a layer of security at the DNS infrastructure level. Prevents data theft and corruption by stopping malware from “phoning home” to threat actors and prevents activation of ransomware.

Disaster Recovery

If DR services are required, you may leverage Microsoft Azure Active Server Recovery (ASR) via the Server to provide:

- Replication of VMs from the Hybrid Server to Azure
- Leverage Azure as production resources in the event of a disaster



Hybrid Server Technical Features Summary



Windows Server 2016

Windows Server 2016 is the cloud-ready operating system that supports your current workloads while introducing new technologies that make it easy to transition to cloud computing. Key benefits are:

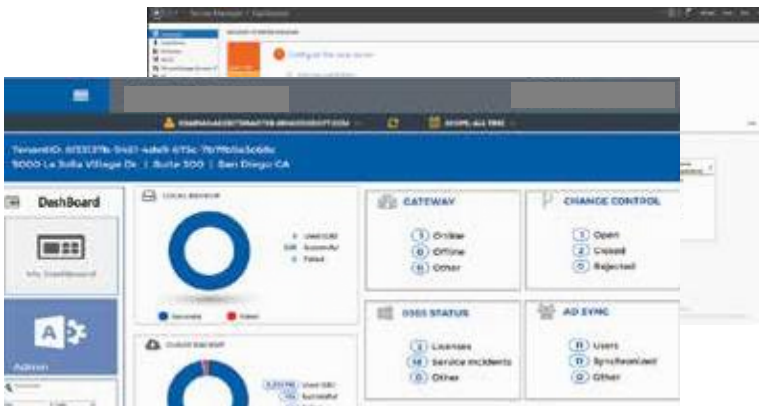
- Tighter Azure AD integration
- Increased backup performance
- Enhanced security features
- High performance HyperVisor

Advanced File Sharing via CentreStack

A complete managed File Sync and Share solution that is hosted on the Hybrid Server. It is the simplest way to bring file sharing, sync, and mobile access to your existing file storage.

Featuring:

- Easy migration with existing file permissions
- Native drive mapping
- File locking
- RDS replacement



Centralized Dashboard

Fully integrated dashboard that provides:

- Real-time data and status of the services and resources being delivered via the Hybrid Server
- A single view for auditing and reporting via the dashboard

Hybrid Server is Fully Managed

Included in the monthly fee, is monitoring and management of the Hybrid Server. Services monitored & managed include the server and hardware components, the local backup of the virtual servers and data, and offsite replication of data to the Azure public cloud.

